



Light efficiency:

18 Lumen/Watt

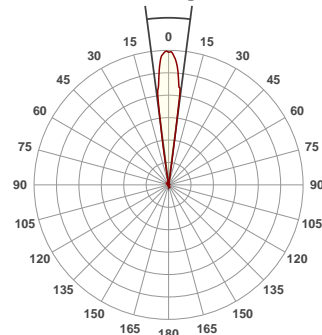
Light quality:

CRI: 0.0

Color temperature:

0 K

14.9°



Product name:

Focus Spot Two

Test:

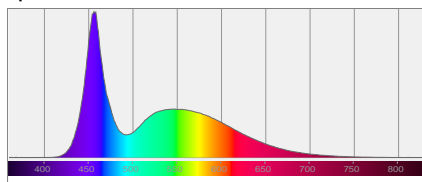
Zoom In White

Date:

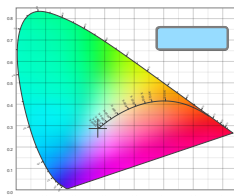
5/18/2017

Output: 1603 lm Power consumption: 87.7 W Peak: 31565 cd

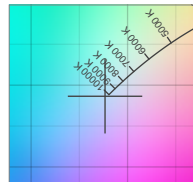
Spectral distribution



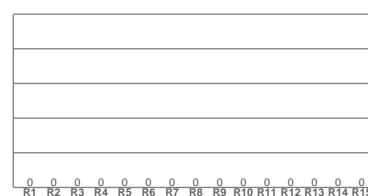
Color coordinates



Zoom color point

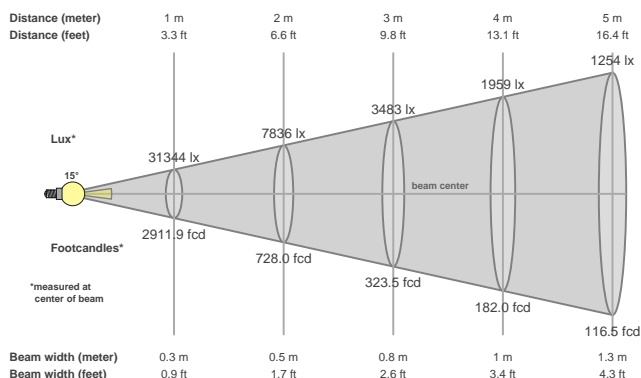


CRI R values



Color temperature	Color rendering index	Red component	Color fidelity	Color gamut	Color quality scale	Color coordinate cie 1931	Color coordinate cie 1931	Color coordinate	Color coordinate	Color divition from black body
CCT	CRI	CRI R9	TM30 Rf	TM30 Rg	CQS	x	y	u	v	Δuv
0 K	0.0	0.0	0.0	0.0	0.0	0.277	0.286	0.188	0.292	n/a

Beam details



Beam angels

Beam angle 50%	Field angle 10%	Cutoff angle 2,5%
14.9°	17.5°	18.4°

Beam intensities

Peak intensity	Int. ratio in 120° cone	Int. ratio in 90° cone
31565 cd	1.0%	1.0%

Power

Power	Power factor	Power frequency
87.7 W	0.97	60 Hz

Nominal voltage	Voltage	Current
230 V	114 V	0.790 A

Beam intensities from 1-20m

1m	2m	3m	4m	5m	6m	7m	8m	9m	10m	11m	12m	13m	14m	15m	16m	17m	18m	19m	20m
3.3ft	6.6ft	9.8ft	13.1ft	16.4ft	19.7ft	23ft	26.2ft	29.5ft	32.8ft	36.1ft	39.4ft	42.7ft	45.9ft	49.2ft	52.5ft	55.8ft	59.1ft	62.3ft	65.6ft
31344lx	7836lx	3483lx	1959lx	1254lx	871lx	640lx	490lx	387lx	313lx	259lx	218lx	185lx	160lx	139lx	122lx	108lx	97lx	87lx	78lx
2911.9fcd	728fcd	323.5fcd	182fcd	116.5fcd	80.9fcd	59.4fcd	45.5fcd	35.9fcd	29.1fcd	24.1fcd	20.2fcd	17.2fcd	14.9fcd	12.9fcd	11.4fcd	10.1fcd	9fcd	8.1fcd	7.3fcd